

**GRACE  
LUTHERAN  
CHURCH**

5201 Urbandale Avenue  
Des Moines, Iowa 50310  
515-276-6873  
[www.gracedm.org](http://www.gracedm.org)

**Pastor Gregory Davis**  
Temporary

**Pastor Michael Schmidt**  
On Sabbatical

**Minister for Youth and Family**  
Ellen Rothweiler  
[ellen@gracedm.org](mailto:ellen@gracedm.org)

**Minister for Worship and Music**  
Emma Stammer  
[emma@gracedm.org](mailto:emma@gracedm.org)

**Organist**  
Richard Snyder  
[rich@gracedm.org](mailto:rich@gracedm.org)

**Grace Kids' Care Director**  
Mary Edwards  
[mary@gracedm.org](mailto:mary@gracedm.org)

**Minister for Administration**  
Denise Friesth  
[denise@gracedm.org](mailto:denise@gracedm.org)

**Minister for Communications**  
Michelle Voelker  
[michelle@gracedm.org](mailto:michelle@gracedm.org)

**Office Assistant for Worship**  
Jessye Flannery  
[jessica@gracedm.org](mailto:jessica@gracedm.org)

**Custodian**  
Todd Haugen 1-515-520-4450

## Inside This Issue...

- 2... Celebrations, Sympathies, Thank Yous
- 3... Spotlight: Welcoming Children & Families
- 4... Finance Report, DMARC donations
- 5 ... Member Care Car Show Results, photos
- 6... Active Grace Updates
- 7... Calendar, Groups, New Member Class
- 8... LSI Update
- 9... Flower & Visit Thank Yous, Roses
- 10... Scholarship, Library, Community News

## Worship with Holy Communion

Sundays at 9:00 a.m.

*Fellowship & coffee time at 10:00 a.m.*

## Office Hours

9 a.m. – 2 p.m. Monday-Thursday, closed Friday

## Financial Documentation. Best Practices. Efficiency. Effectiveness. Legal. Risk Management.

These are some of the vocabulary words used by Church Administrators.

I recently attended a workshop at the Southeastern Iowa Synod office for Administrators and New Treasurers. It was wonderful to gather with colleagues from across the synod to learn about resources available for our congregation. I left the workshop encouraged and energized by all the support provided at the congregational and the synodical level!

Church administrators work closely with the church treasurer, financial secretary, accountant and other staff to ensure the church properly uses funds and meets financial obligations. The care of resources and exercise of good stewardship is an important component of ministry.

One guiding principle is the use of Best Practices regarding Separation of Financial Responsibilities. Why do we have a different people serving in roles such as administrator, treasurer, financial secretary, accountant, counter, etc. here at Grace Lutheran Church? The following excerpt can help answer that question.

## **Congregational Treasurers and Bookkeepers Financial and Accounting Guide**

*(A resource provided by the Office of the Treasurer of the Evangelical Lutheran Church in America)*

*There should be clear separation of duties between those responsible for handling and recording the income of the congregation and those responsible for handling the disbursements of the congregation. A strong system of internal controls safeguards the assets of the congregation and protects the character of the individuals handling cash or writing checks. The congregation should operate under the same standards and safeguards as a good business operation. This includes written policies and procedures for key responsibilities.*

**Continued on Page 3**

### Happy July Birthday

- 1 - Carl Feilmann  
Michael Nizzi  
Matthew Johnson
- 3 - Dale Bordt  
Marilyn Anderson
- 4 - Sawyer Shiffler
- 5 - Levi Wilner
- 7 - Rosella Dingman
- 8 - Donna Trickle
- 9 - Carleigh Ridnour  
Henry Jordahl
- 11 - Kristina Hutton  
Rebecca Lewis
- 12 - Melissa Petty
- 13 - Amy Westercamp  
Joshua Sherer
- 14 - Stacy Walters  
Matthew Harbaugh  
Eric Selander  
Heather Honnold  
Bailey Woodruff
- 15 - Serena Helton  
Rebecca Harmon  
Hannah Jensen
- 16 - Melinda Scholten  
Tracy Justice  
Joviana Reyes
- 17 - Lucille Krauss  
Jayne Mortenson  
Christie Rosheim
- 18 - Bradley Nelson  
Anders Nelson  
Adam Friesth  
Eric Friesth
- 19 - Deanna Snyder
- 20 - Krista Nelson  
Martha Kaleewoun
- 21 - Robyn Reha  
Christian Culp
- 22 - Kathryn Schaller
- 23 - Pat Bordt  
Linda Biegger
- 24 - Jacob Gibney  
Declan Holst
- 25 - Justin Anderson
- 26 - Morgan Mortenson
- 27 - Jeff Robbins
- 29 - Genaro Ruiz
- 30 - Gary Denton
- 31 - Emily Knoop



### Happy July Anniversary

- 8 - Ashley and Josh Lund
- 9 - Amy and Scott Neal
- 15 - Jenie and Michael Schmidt  
Rhonda and Bill Jensen
- 20 - Katherine and Justin Scholl
- 21 - Loree and Tim Nelson
- 22 - Cathy and Dean Watson
- 24 - Penny and Michael Hansen

### Our Sympathies are with:

The family of Ross Peeler  
on the loss of his mother,  
Nancy Claire Peeler.

The family of Ellen Batten  
on the loss of her brother,  
Dennis Thurston.

The family of Dorothy  
Jensen.



**The Office will be closed Thursday, July 4 in observance of Independence Day.**

### Thank You

We want to thank the Pastors Greg and Mike for their visits during Gayle's illness and Greg for the funeral service. Thank you to the members of Grace church for the cards, calls and condolences after Gayle's passing. A thank you to the member care team for giving us communion, for the beautiful prayer quilt, food, and their compassion.

Virgil Olson Family

### Grace Member Care and First Circle Friends

Thank you all for the gifts of nourishment and compassion as we walked beside our dear son, brother and brother-in-law Mark on his end of life journey. We appreciate all of you.

**Martha Martens  
Alice and Howard Kulzer**



## **Welcoming Children at Grace**

As a parent of a young child, and also as the staff person responsible for ministry with families here at Grace, I have been impressed by how welcome children are in worship. It has been a couple years since we had a nursery staffed during worship and we don't seem to miss it. Children play, and sing and wander in the worship space and no one seems to mind. In fact, many seem to enjoy it! You need to hear that this is a big deal and something that unfortunately does not always happen elsewhere.

We are blessed to be the home of a daycare so our space is well used through the week and year round. We are also blessed to offer two separate weeks of VBS in the summer, filling the building with sounds of young voices singing and laughing. Again, this is not something that happens elsewhere. Many churches stand empty many days during the week and year and mourn the lack of use. The church building is meant to be used and to host and house ministries of the church. Many churches, including ours, lament the fact that there are not more young families and children here week to week, but when they are here and make use of the space we complain about the mess or feel put out by having to make room and work around them. For any of you who have ever been a parent or spent any amount of time with children, you know that mess often accompanies them. Try as you might to keep things clean, your efforts are futile. The best thing to do is pick up what you can but ultimately get comfortable with the mess.

As a church, if we want to welcome young families then we have to know that they will bring all kinds of mess with them. We are far from the days of "children should be seen and not heard". We do so well at welcoming children in worship, and I invite you to extend that welcome to the rest of our building. Those of us who work with children and youth do our best to tidy up after them, but the mess lingers. If you are inclined to be bothered by mess I invite you to offer your concern by helping us rather than complaining. This is a wonderful way to welcome children and their families by accepting all they bring, the good and the bad, and helping to ease the burden that parents and caretakers feel when their children make a mess. This should feel like a home, not some place where you have to always be on your guard and your best behavior. So many of us know what it feels like to be in public with our messy kid(s) and feel judged or be so busy cleaning up the mess that you can't enjoy whatever it is you are doing. Church should not be a place like that. No, I am not saying that kids should be able to trash the place, respect for the space is important and caring for and cleaning shared space is an essential life skill to learn. I am asking for grace. Forgive the mess even if you feel forgiveness is undeserved. We all need grace, but during these early years of life grace feels like salve on an open wound. Let's be about grace here and learn to live with, if not love, the messiness that is life with children.

Ellen Rothweiler  
Minister for Youth and Family

### ***Continued from front page***

*In the congregational setting, a climate of personal trust is usually assumed. This is healthy and proper. The following suggestions should not be interpreted as a lack of trust in the financial officers of a congregation. Rather, they offer protection for their reputation. No person should be placed in a position where any suggestion of mishandling of funds must be defended by the word of one person against that of another. This system is intended to provide verification and support of sound practices at every step. Prudent and consistent practices in handling money help maintain a climate of trust and help safeguard church assets.*

*The same concepts apply to congregational auxiliaries and organizations. The congregation council is constitutionally responsible for the financial and property matters of the congregation (C12.05).*

*Cash transactions should be handled at all times in dual custody. The following functions should be the responsibility of someone other than the treasurer, such as a financial secretary or the stewardship committee:*

- Oversee the counting of offerings*
- Oversee depositing of receipts*
- Train individuals involved in counting the offerings*
- Report to the treasurer the total offerings each week and any special-purpose*

*breakdowns*

- Oversee recording of contributions to the individual contribution records*
- Report on levels of giving to the church council and congregation*
- Provide periodic and annual statements to the contributors for tax reporting*

We are a team here at Grace and are continually evaluating in order to follow best practices. Thank you to all the volunteers that assist with financial matters. If you have questions, please contact me or someone from the Finance Team. We welcome your interest (pun intended) and questions!

**Denise Friesth**

### **Finance Report – May Results**

Financial results for May YTD are as follows:

- Pledged Offerings – Actual \$179,669, Budget \$170,650
- Other Income – Actual \$13,161, Budget \$11,875
- Expenses – Actual \$200,836, Budget \$181,754
- Net activity – Actual (\$8,006), Budget \$771



Actual net activity was unfavorable to budget by \$8,777 an improvement from the prior month deficit of \$13,682. Pledged and unpledged offerings were both above budget. Expenses were significantly above budget due to boiler repairs, flooring repairs, higher insurance and snow removal costs.

### **DMARC July Donation Request: Fresh Vegetables**

onions, potatoes, carrots, zucchini, squash, kohlrabi, kale, beets, sweet potatoes, sweet corn, broccoli, cabbage, tomatoes, bell peppers, Brussel sprouts, peas, bitter melon & leaves, chayote, opo squash, pumpkin leaves, taro, bamboo, lemon grass, bok choy, kabocha, ginger root, garlic, cucumbers, green beans



## GRACE CAR SHOW

A big "THANK YOU" to everyone that participated and helped with the Grace Car Show. To Kevin Krause and Jay Wangerin for their input. To Denise, Michelle, and Ellen in the office with their preparation and support. To Carter Woodruff for food procurement and preparation. To Jill Boeschen for the cookies and brownies. And finally, thank you to all of the car show exhibitors (18 of them) as well as Grace members and even non-members who came by to view a really nice lineup of vehicles. Through the generosity of car show exhibitors and attendees, \$967 was raised for Grace Member Care! We sure hope to do this again next year!



Smart Car Fangs!

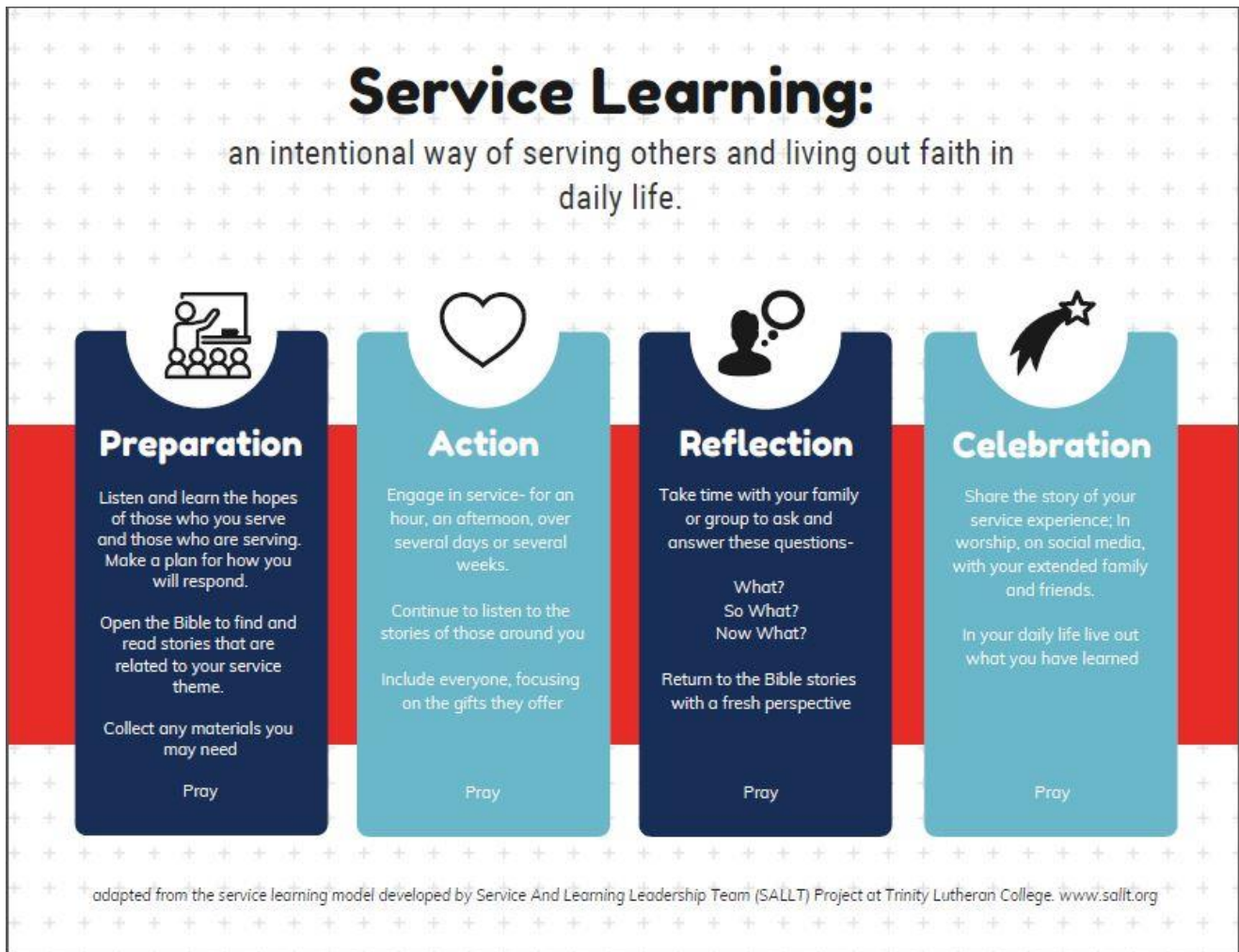


### **New Active Grace format this Fall!**

Beginning on Sunday, September 15 Active Grace (Sunday School) will meet in the late morning/early afternoon of the first and third Sundays of the month and focus on family service learning experiences. We will still choose themes to guide us in our service, our Fall theme being Stewardship. On the first Sunday of the month we will begin at 11:00 am with worship and a meal as a part of our time together and on the third Sunday of the month service opportunities will be offered in the community in the late morning and afternoon (time and place TBD). Students in Preschool through 12<sup>th</sup> grade and their parents will have a meaningful role in the service we do as Active Grace.

Why family? Why include parents? Because faith formation happens in the home. Because here are Grace we have the honor of being with these children only about 40 hours a year or less. Faith needs to be practiced through the days and weeks of children's lives. With Service Learning we seek to provide a way for families to live faith in daily life and to give the teachings of Christ and the Bible hands and feet in the world.

If you have questions or want to talk with me about the new Active Grace format, I will be at a table in the Gathering Hall following worship most Sundays in July eager to chat with you about this.





### **Every Week (not listed in calendar at right)**

#### **Sundays**

9:00 a.m. Holy Communion Worship

10:00 a.m. Coffee & Fellowship, Gathering Hall

#### **Tuesdays**

10:30 – 11:30 a.m. Centering Prayer in the Upper room, led by Julie Honsey

11:00 a.m. Staff meeting, Innovation lab

Tuesday Bible Study with Pastor Mike will continue in September

#### **Wednesdays**

9:00 a.m. Willing Workers work & coffee time

#### **Thursdays**

9:00 a.m. - 11:00 a.m. Quilters

Msindo Quilting Room, beneath the Sanctuary.

Please note: this is a no food, no perfume/added scent space: water is allowed in closed containers only.

#### **Other Grace Groups!**

**Men's Work Group**, Saturday, July 13.

We meet on the second Saturday of each month, 8:30 a.m. – noon. We start with breakfast in the kitchen, and a devotion, followed by work around the building or grounds as needed.

#### **Altar Guild Meeting, meal, and fellowship:**

**Saturday, July 20, 10:00 a.m.** location to be announced for coffee, meeting, fellowship.

Please join us! Contact

[anderson.sue.a@gmail.com](mailto:anderson.sue.a@gmail.com) to be included in the location emails.

#### **Grace Stitching & Needlework Group**

We meet every 2<sup>nd</sup> and 4<sup>th</sup> Thursdays of each month in Grace Hall. Contacts: Helen Ringgenberg or Carol Krause

#### **First Circle Friends – Note date changes**

LSI Respite Program for those in early stages of memory loss. Typically meeting at Grace on the 1<sup>st</sup> and 3<sup>rd</sup> Thursdays of the month, the first meeting is cancelled due to the national holiday. Contact <https://lsiowa.org>

**Newsletter submission deadline:** July 24

### **July Calendar**

1 – 4:30 p.m. AA Groups GH & Café

2 – 6:30 – 9:00 p.m. Des Moines Knitters Guild,  
Grace Hall

4 – Fourth of July

Grace Kids Care Closed

Grace Church Office Closed

No First Circle Friends

5 – Grace Kids Care open

Grace church office closed

8 – 4:30 p.m. AA Groups GH & Café

9 – 6:30 p.m. Exec Meeting

11 – 9:00 – 11:00 a.m. Quilters

10:00 a.m. – 3:00 p.m. Stitching Group, GH

13 – 8:30 a.m. – noon Men's Work Group

15 – 4:30 p.m. AA Groups GH & Café

18 – 9:00 – 11:00 a.m. Quilters

10:00 a.m. – 3:00 p.m. First Circle Friends, GH

20 – 10:00 a.m. Altar Guild meeting – off site

22 – 4:30 p.m. AA Groups GH & Café

25 – 9:00 – 11:00 a.m. Quilters

9:30 a.m. Martha/Lydia Circle – Grace Hall

10:00 a.m. – 3:00 p.m. Stitching Group, GH

28 – August 2 Confirmation Camp at Lutheran Lakeside



#### **The Beaverdale Farmers Market has returned! The Evangelism Committee**

from Grace is once again manning a Grace outreach booth at the market.

The booth will be open Tuesdays, through Sept 10, from 4:30 - 7:00 pm. Stop by and see them!

Additional volunteers are always welcome. Contact Nancy Crowfoot, or the office for more information.



#### **New Member Class**

Sunday, September 15, 10:30 a.m. in the Innovation Lab.

If you are interested in learning more about what it means to be a member of Grace, join Pastor Mike in the Innovation Lab on Sunday, September 15, at 10:30. Contact the office at 515-276-6873 if you have questions.



### **LSI's Host Homes Program**

Each year, Lutheran Services in Iowa (LSI) empowers hundreds of Iowans with disabilities. There is no greater joy for us than seeing an individual develop greater independence, find their confidence, and thrive in their community. And through our innovative Host Homes program, LSI has found a new way to lift up our Iowa neighbors.

Through the program, adults with disabilities or “mentees” move from a supported community living setting – like a 24-hour, fully staffed home with roommates – into a private family home with a Host Homes “mentor”. LSI collaborates with the individuals we serve and the contracted mentors to ensure each match is the perfect fit and to create a shared living opportunity that is beneficial to mentors and mentees.

LSI is seeking compassionate and dedicated caregivers to join us in the mission. If you have room in your heart and in your home, being a Host Homes mentor might be for you! Visit [LSIowa.org/HostHomes](http://LSIowa.org/HostHomes) to learn more. If you are interested in supporting crucial programming like LSI's Services for People with Disabilities, please contact Deb Whitford, LSI director of philanthropy and church relations, at [Deborah.Whitford@LSIowa.org](mailto:Deborah.Whitford@LSIowa.org) or 563-676-2065.

***Our Mission: Lutheran Services in Iowa responds to the love of Jesus Christ through compassionate service. LSI is an affiliated social ministry partner of the Iowa congregations of the ELCA (Evangelical Lutheran Church in America) and a member of LSA (Lutheran Services in America). We proudly serve people of all ages, abilities, religions, sexes, gender identities, national origins, ethnicities, races, and sexual orientations. Learn more at [LSIowa.org](http://LSIowa.org) and [Facebook.com/LSI.Iowa](https://www.facebook.com/LSI.Iowa).***

### **The Best Kind of Bond**

Amanda needed a change. For years, she had received 24-hour care, living in a busy home with three roommates. But she was lashing out and becoming aggressive, and she required multiple psychiatric hospital visits throughout the year to receive mental health treatment. She and her dad, Bruce, knew she needed more one-on-one attention to thrive.

They turned to LSI's new Host Homes program. Through LSI's Services for People with Disabilities, the program allows adults with disabilities to transition from supported community living to a private family home where they build positive, lasting relationships with a specially selected mentor instead of a team of staff members.

Soon, Amanda was matched with Mavis, an LSI Host Homes mentor. On the day Mavis and Amanda first met, they clicked. And a year later, the family hasn't looked back.

Instead of several emergency calls and incidents each year, Amanda has gone over a year without any mental health hospitalization. Mavis has spent the last year collaborating with Amanda to find the best way for her to communicate her emotions. She wants Amanda to know her voice and thoughts are heard.

“Mavis has helped in every way,” Bruce says. “She cares, she's loving, she's patient, and she's getting Amanda engaged in art classes and hobbies she loves. I have a happier daughter now.”





### **Fall Adult Education will return in September**

Usually in Grace Hall, from 10:15 – 11 a.m. after Sunday Worship, occasionally other smaller groups meet in the library to discuss a book, watch a video series, or meet with Pastor Mike about membership.

If you are considering a topic for Fall Adult Education, or if you are using a space at Grace for an event, please fill out the Adult Faith Enrichment Opportunity Form, found in the office, or on the website resources page (under Forms and Applications).

<https://gracedm.org/content/uploads/2018/01/Adult-Faith-Enrichment-Opportunity-form.pdf>

This form helps us understand and coordinate all of your needs: room set-up, technology needs, the audience for the event, and in what manner it should be communicated.

### **Member Care Thank You's**

Grace Lutheran – Thank you for all the wonderful Easter Lilies and Poinsettias you have brought me in the past - as well as the gifts. It all has been greatly appreciated! Beverly Petty

To Friends at Grace Lutheran,

Thank you very much for the 2 beautiful Gerbera Daisies you sent to LaRue and me. They are planted on our patio and doing very well. We miss going to Grace Lutheran. We have church services on the television that we listen to. We read devotions every day. We wish you all a happy life. LaRue Buihner, Leann Davis

Dear Friends at Grace,

Thank you for the red Gerbera daisy. Don planted it in the flower bed and I'm watching it grow. Thanks to Chuck and Tammy Denton for delivering it. Take Care.  
Love, Bonnie Swanson

Dear Committee members,

Thank you so much for the lovely Gerber daisy (one of my favorites), and the yummy plate of goodies. They were certainly enjoyed! Also, thank you to Cherie for delivering them. I loved visiting with her! Fondly, Virginia Naney

Thank you for the plant and cookies. A real treat. Enjoy hearing from you any time. Enjoy the quarterly devotional in large print. Blessings, Marvin Simonsen



### **Celebration Roses**

Roses may be ordered for the altar on the occasion of a new baby! We will not automatically order a rose out of consideration for family privacy, until one is requested. To order a rose, call the office by Wednesday afternoon if you prefer a written announcement printed for that Sunday, or Thursday at 2 p.m. for a verbal announcement. There is no cost for the rose, you may pick it up after Sunday worship. If you wish to keep the vase there is a nominal fee.

### Scholarships

Grace Evangelical Lutheran Church Scholarship Application Form is available on the website for students who are members of Grace who have indicated a firm desire for further education and have been accepted by a Lutheran seminary, college, or university.

Scholarships shall consist of a grant of up to \$500.00 per recipient per year to a maximum of four, and will be paid directly to the seminary, college, or university, along with appropriate notification of the grant. Grants shall be distributed in July or August preceding the Fall semester.

Find the application form at [www.gracedm.org](http://www.gracedm.org) under the Resources Tab, Forms and Applications. Please attach letter or request and essay to the application form and return to Grace Evangelical Lutheran Church Attn: Scholarship Committee as soon as possible.



### Reminder that we have a beautiful Little Free Library

Stop by to check out the current offerings, take a book, leave a book (or three or four!).

### Summer Meal Programs

Summer Meal Programs are available through many local providers and organizations. In Iowa alone, over 40,000 children ages 18 and under are eligible for free meals, and only 3,000 participate. Locally, Des Moines Public Schools has 19 meal sites running through the summer.

To find a summer meal site near you use the [USDA site locator tool](#) or text "FOOD" to 877877.

**Thank you** to all the women and men of Grace who give of their time and hearts during funerals, setting lovely tables, ushering, providing and serving luncheons and caring for families in need. Thank you to Grace Kids Care Staff for your flexibility. You are all appreciated.



### LSI Global Greens Farmer's Market Saturdays 9 a.m. – 1 p.m. LSI Parking Lot 3200 University Ave, Des Moines, IA 50311

This program reconnects former refugee farmers with the land as they build their new life in the U.S. Through Global Greens, farmers can access space to grow food, learn more about U.S. agriculture, and start their own business by selling produce at our Farmers' Market and in our CSA. Find out more at <https://lsiowa.org/refugee/global-greens/>

### Request for help writing Funeral /Memorial acknowledgements

We are looking for one or more people who are willing to spend a little time writing these important notes to those who contribute. If you can help, please contact Denise at 515-276-6873 or [denise@gracedm.org](mailto:denise@gracedm.org)

We have one person interested in sharing the position, if you are wondering what this occasional position entails, please contact the office and we can fill you in, Lorna Johns will also be happy to answer any questions you might have. Thank you for sharing a little bit of your time!