

**GRACE
LUTHERAN
CHURCH**

Sunday Schedule

9:00 a.m. Worship, in-person and Online

Morning Prayer Mon, Wed, Fri at 9:30 a.m.

@Gracelutherandm

Office & Open Building Hours

9 a.m. – 1 p.m. Monday - Thursday

5201 Urbandale Avenue
Des Moines, Iowa 50310

515-276-6873

www.gracedm.org

Pastor Michael Schmidt

mike@gracedm.org

Vicar Bunny Stoutes

Bunny@gracedm.org

Minister for Worship and Music

Emma Stammer

emma@gracedm.org

Organist

Richard Snyder

rich@gracedm.org

Minister for Administration

Denise Friesth

denise@gracedm.org

Minister for Communications

Michelle Voelker

michelle@gracedm.org

Office Assistant for Worship

Jessye Flannery

Jessica@gracedm.org

Custodian

Todd Haugen 1-515-520-4450

Inside This Issue...

- 2... Celebrations & Sympathies, Circle news, Upcoming report deadlines
- 3... Vicar Bunny's note
- 4... Hymn Sing, Member Classes, Volunteer signup
- 5... Notes from Rich - Hymns
- 6... No Shave November
- 7... LSI Update, Pledge Packets & Commitment Sunday
- 8... Dessert Potluck, Membership Survey, Adult Education topics
- 9... Council Highlights, Finance report
- 10... Landmark day at DMARC, LFP needs
- 11... Star Tree, Advent Retreat
- 12... Thank you and so many photos!

who from their labors now rest...

Cathleen Swanson

Pat Bordt

Larry Oberg

Arnold Johansen

Judy Cramer

Virginia Naney

Steve Young

Karen Mann

Delores Larsen

As I sit and pray for the families of these saints and the many others connected to the people of God at Grace Lutheran Church, my heart is filled with such grief and joy. I remember with fondness the experiences with these saints, the relationships, and the lessons that I have learned. I also grieve as the world will never be the same. This year, I find myself, again, leaning on these words of John Donne, from his "Devotions upon Emergent Occasions":

The church is Catholic, universal, so are all her actions; all that she does belongs to all.

When she baptizes a child, that action concerns me; for that child is thereby connected to that body which is my head too, and ingrafted into that body whereof I am a member.

And when she buries a man, that action concerns me: all mankind is of one author, and is one volume; when one man dies, one chapter is not torn out of the book, but translated into a better language; and every chapter must be so translated; God employs several translators; some pieces are translated by age, some by sickness, some by war, some by justice; but God's hand is in every translation, and his hand shall bind up all our scattered leaves again for that library where every book shall lie open to one another. As therefore the bell that rings to a sermon calls not upon the preacher only, but upon the congregation to come, so this bell calls us all...No man is an island, entire of itself; every man is a piece of the continent, a part of the main. If a clod be washed away by the sea, Europe is the less, as well as if a promontory were, as well as if a manor of thy friend's or of thine own were: any man's death diminishes me, because I am involved in mankind, and therefore never send to know for whom the bells tolls; it tolls for thee.

Saints, continued on page 3

Happy November Birthday

- 1 - Remington Anderson
Zelma Wilson
- 2 - Mike Peterman
- 4 - Gabriella Artzer
Bradley Nelson
Aubrie Stickrod
- 5 - Sally Thielking
- 6 - Benjamin Gronert
Laura Grotheer
Ralph Watson
- 8 - Austin Schaller
- 11 - Yaritza Marquez
Gary Scholten
- 12 - Zoe Lawson
- 13 - Kurt Bowermaster
Jasey Bradwell
Zachary Jensen
- 14 - Linda Moravec
- 15 - Gary Batten
Wilma Frost
John Justice
Mark Ridnour
- 16 - Haley Dostalick
- 17 - Gloria Moon
Madison Robbins
- 19 - Nick Medhurst
Greg Ruckdaschel
- 21 - Lilli Kent
Kelley Riordan
- 22 - Zachary Kulzer
- 23 - Ashley Lund
- 24 - Jon Rissman
- 25 - Kerry Riordan
- 26 - Peter Kiefer
Jessica Rissman
Paul Thielking
Virginia Wangerin
Carol Woodruff
- 29 - Angie Hidalgo
Ed Ridnour

NOVEMBER



Happy November Anniversary

- 2 – Richard and Deanna Snyder
- 7 – Paul and Alexson Calahan
- 13 – Gary and Ellen Batten
- 26 – Todd and Barb Burley
Frank and Colleen McKinney



Prayers and Sympathies

We hold the families and loved ones of the following people in our hearts and prayers:

Delores Jensen

Pastor Don Rothweiler

James (Jim) Dyson, brother of Sandy Briggs

Marilyn Oberg

Jose Mendez, father of Caden Mendez



Lydia/Martha Circle

We will meet on Thursday, November 17 at 9:30 a.m. in Grace Hall.

Our next meeting will be in March, 2023.

Fall Back!

Sunday November 6, 2022
You gain an extra hour of sleep!
Don't forget to turn your clocks
back before you snuggle up to
zzzz!



Reports coming due!

Grace Endowment Reports are due December 1, 2022

Report requirements can be found in your acceptance letter - the report shall include documentation of the expenditures and completion status of the project.

Committee Reports for the Annual Report

Will be due in early January, but we will accept them as soon as you have them ready!

Final Contributions for 2022

Final Contributions should arrive at the church office no later than Wednesday, December 28 to be counted toward 2022.

Saints, continued from page 1

There is something comforting, to me, about this passage. We often focus on the last line - "Never send to know for whom the bell tolls; it tolls for thee." - as if to proof-text it as a harbinger of doom and mortality. The text leading up to that quote, carries the truth that we are all interconnected as one humanity. Any loss diminishes the whole, and it is never the same.

The other truth in this text is that the chapter written in the book of humanity is not torn out; it is translated by others. In short, the story lives on, in you, in me, in loved ones, and the many who were impacted by their lives.

My heart is heavy, and it is not without hope. The bell has tolled often in recent years. Each time, the conversations have been filled with love, care, and beauty as the chapter is retold through loved ones. I find such strength and hope in these conversations. I am filled with grief and joy, never without hope.

In Christ,
Pastor Mike

Greetings, Friends!

The month of October has been full of highs and lows, ups and downs, and everywhere in between! A few of my highs: Being given the opportunity to lead by first adult Bible study on a Sunday morning where we discussed the question, "Where does loyalty pull us," highlighting the book of Ruth. Many thanks for those who were able to attend! Confirmation also kicked off wonderfully! The youth learned about the places and spaces of the New Testament, giving context while upping their Bible literacy. We'll dive further into the New Testament this semester, discussing the life of Jesus, the letters from Paul, and so much more. Moving forward in education, I'm going to continue working on finding a rhythm as a leader that works for my style. I've come to the realization that I just can't "be" Pastor Mike. His gifts are different than mine; of course, our teaching styles will be different. Leaning into my gifts offers an opportunity for growth!

Another high was being able to spend time with my daughters while on vacation the third week of October – together for the first time over 15 months. We ate Mexican food for almost every meal, laughed together, cried together, and cherished every single moment. (I must share; I'm delightfully surprised at the quality of Mexican food here in Iowa. It's outstanding! I'm not sure why we went on a Mexican food binge while I was in Texas.) We're counting down the days until we are together again. My youngest daughter, Courtney (20), should be here in Des Moines the first part of December. My oldest, Brooklyne (21), should make her first trip here in the spring. I can't wait for them to meet the people of Grace and to spend time one on one with them.

One of my struggles of the month is that The Little Food Pantry project is in danger of stalling out; this is weighing on my heart and mind. We have the volunteers to fill the pantry, but the backstock room is almost empty. With the news of the broken partnership between 11 DMARC Food Pantries and the Food Bank of Iowa (published October 21, Des Moines Register) and the closure of our Price Chopper on Merle Hay, our community is in need more than ever. Another concern is we need to shift our back stock as we think about the cold temperatures of winter, keeping food safe. In response, we will stock dry goods such as cereals, pasta, etc. No glass and no canned goods during the winter months will be set out. Exploded food in the Little Free Pantry would be terrible!

The church staff is in full swing as we gear up for the season of Advent and the upcoming Christmas program!

Peace, today and always,
Vicar Bunny





The Advent season is approaching, and this year you are invited to participate in a hymn-sing before worship each of the Sundays! On Nov. 27, Dec. 4, 11, and 18 at 8:45am there will be an Advent hymn sing taking place in the Sanctuary.

There are so many lovely hymns in the ELW book appropriate for the season, and it is disappointing when we can't get to all of them during worship itself - so this is your chance to get to sing your favorites and even learn some new ones! Look for more information in November. We hope to see you there!

New Member Classes with Pastor Mike

The next new member class will take place after worship on the last Sunday of November. They can be help in-person or by Zoom – please R.S.V.P. by calling the office! And of course, if at any time you are curious about what it means to become a member of Grace, please contact Pastor Mike. Mike@gracedm.org or 515/276-6873



**Greeters, Ushers, Lectors for Sunday worship at 9:00 a.m.
Coffee and Donut service volunteers**

Sign up at: <https://www.volunteersignup.org/3YPK9?classic>
or contact Emma, emma@gracedm.org

Worship, written materials, and other resources.

Sunday Worship now in person at 9:00 a.m. (every Sunday)

Livestream online will continue to be available on our webpage and Facebook:

- **On our website:** On the home page, in the "Welcome to Grace" section on the www.gracedm.org homepage, you will see a red button "Online Worship". Click on that button to be taken to our permanent Live Player. If you see our logo, know you are in the right place and worship will begin shortly.
- **On Facebook:** Find worship on our Facebook page – type @GraceLutheranDM into your search bar to find the page. The service will not appear as a scheduled live feed. The service will appear as live shortly before 9:00 a.m. as the stream begins. There may be a couple of minutes where you see the logo without sound. If you see that, know that you are in the right place and the service will begin shortly. Thank you for your patience.

Written materials and Announcements can be found in the Resources section of the website. Click on the word Resources at the top right of any page of the website and go from there! Or, follow this link <https://gracedm.org/resources/>

Missed a worship service? [Find and watch them here.](#)

Worship videos are usually posted on the website within 24 hours. The video is usually available on Facebook within a few minutes of the end of worship.

Sunday Fellowship You are welcome to use the Gathering Hall for fellowship after worship.

Weekday Prayers are 9:30 a.m. Monday, Wednesday, and Friday on Facebook. If you are not on Facebook, you can still access it by typing @GraceLutheranDM into your browser, or through this link <https://www.facebook.com/Grace-Lutheran-Church-626637384050683/>

Notes from Rich

The topic for this issue of Notes is the Evangelical Lutheran Worship book, commonly referred to as the hymnal or the ELW. Hymnals for Lutheran congregational singing and worshiping have been published since the Reformation. Earlier versions of the current hymnal can be traced as far back as 1748 in the US. As historical and ethnic centered Lutheran church bodies merged in the second half of the 20th century, three different hymnals were published roughly chronologically with the mergers. The Service Book and Hymnal (SBH) was published in 1958, and is often called, “The Red Book.” This hymnal was followed by the Lutheran Book of Worship (LBW) in 1978, and it is often called “The Green Hymnal.” The current hymnal, ELW, was published in 2006, and it is sometimes called “The Cranberry Hymnal” to differentiate it from the red SBH. Multiple supplements to these hymnals have appeared over the years such as With One Voice “The Blue Hymnal” and All Creation Sings, “The Purple Hymnal.”



The ELW contains ten musical settings for liturgical worship services; forms for occasional services, such as baptisms and funerals; the Psalms; alternate musical arrangements for portions of the ten liturgies; hymns grouped by subjects, such as Christmas, Lent, gathering, or dismissal; and a variety of indices and listings of sources, both musical and textual.

The hymns within the ELW are printed in a variety of forms which has led to inquiries such as, “Why is there only a melody and no harmony?” “Why are there no stems on the notes?” In response, consider the following examples. Figure 1 shows the opening line from the hymn “Of the Father’s Love Begotten” (ELW #295).

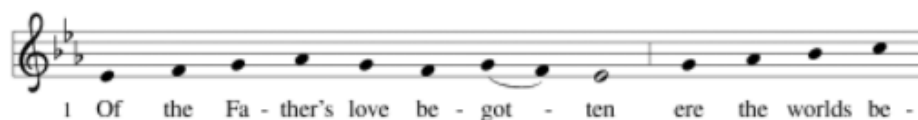


Figure 1.

This tune, from a thirteenth century plain chant, is intended to be sung in unison, i.e. all voices singing the same melodic line with no harmony. No stems are attached to the notes because there is no defined rhythm, i.e. no eighth notes or sixteenth notes. The open notes, such as the end syllable of begotten, means that note is held longer than the solid notes, but not necessarily strictly twice as long. In fact, the solid notes may each be held a differing length of time. Also true of this and other hymns in the ELW, there is no time signature (such as 3/4, 2/4, or 3/8 time), and no indication of tempo. The musical key is defined; in this case, three flats (E-flat major). When this hymn is sung with an accompaniment, the melody and instrument parts are contained in a separate volume to assist the musician in guiding the song. The considerations for tempo, phrasing, and volume will be addressed in a future issue of Notes.

Next, consider Figure 2, the first line of the hymn, “In the Singing” (ELW #466).



Figure 2.

The words and tune for this hymn were written and composed in the 20th century, and so the notation is in standard contemporary music form. No harmony is present because the composer

continued on page 6

Notes from Rich, continued from page 5

did not write one, and we can assume then that he wished the hymn sung in unison. Notice again that there is no time signature, but there are measure bars helping to define the time signature as 4/4. By the way, the names of composer and author are printed at the bottom left edge of the page in the hymnal. See Figure 3 for this hymn's sources, tune name (Bread of Peace), and copy write information.

Text: Shirley Erena Murray, b. 1931
Music: BREAD OF PEACE, Carlton R. Young, b. 1926
Text and music © 1996 Hope Publishing Company, Carol Stream, IL 60188. All rights reserved. Used by permission.

Figure 3.

Lastly, consider the first line of the hymn "A Mighty Fortress Is Our God" (ELW #504 and #503), shown here in two different forms in Figures 4a and 4b.



Figure 4a.



Figure 4b.

The version in Figure 4a has an even, march-like tempo, termed isometric. The version in Figure 4b is uneven because the note values vary between one or two beats. The number of words in each version is equal, but the note patterns are different. Why did the most recognized hymn in Lutheranism have two versions in the same hymnal? The art of compromise is the answer. One of the potentially merging Lutheran bodies insisted on the tune in Figure 4b, and in the name of outward harmony, both versions were included. Not only that, there is a second translation (ELW #505), a more traditional version.

Did this presentation stir up questions about the ELW or worship music? Send those inquiries to me at: rich@gracedm.org. I'll address them in future issues.

No Shave November!

Here's our group "Before" photo on Sunday, October 30. Rich jokes he is the goal, but plans on growing out his sideburns!

Paul Kallenbach, Pastor Mike, Aaron Brandsfield, Eric Weber, Rich Voelker

Is anyone else participating in No Shave November? Let us know!





National Adoption Month

November is National Adoption Month, a time to honor families who have opened their hearts and homes to children and teens. For LSI, it is a time to celebrate the families we support through Foster Care and Adoption services, and to raise awareness for the hundreds of Iowa children in need of a safe, healthy home.

LSI Foster Care and Adoption recruits, licenses, and supports foster and adoptive families to ensure every Iowa child grows up in a safe, stable environment. But more work needs to be done. Thousands of children in the U.S. are waiting to be adopted from foster care into a “forever family”.

To learn more about supporting Iowa children in foster care, visit LSIowa.org/Foster, or contact Deb Whitford, LSI Director of Philanthropy and Church Relations, at Deborah.Whitford@LSIowa.org or 563.676.2065. LSI is also available to provide a customized virtual shared ministry opportunity for your congregation. If you would like to share the message of LSI with your community, please visit LSIowa.org/church-relations or contact our Waverly office at 319.352.2630 to get started.

Our Mission: Lutheran Services in Iowa responds to the love of Jesus Christ through compassionate service. LSI is an affiliated social ministry partner of the Iowa congregations of the ELCA (Evangelical Lutheran Church in America) and a member of LSA (Lutheran Services in America). We proudly serve people of all ages, abilities, religions, sexes, gender identities, national origins, ethnicities, races, and sexual orientations. Learn more at www.LSIowa.org and www.facebook.com/LSI.iowa.

A Picture of Foster Care and Adoption

The goal of foster care is to reunite children with the parents when possible. The foster family can play an integral part in making that happen, often becoming mentors to the birth parents, helping them learn parenting skills they may not have had modeled to them.

An LSI provider told me about a picture she had recently received. Imagine, if you would, a photo of two women, one on each end of a bench, and four kids with them. All happy. All smiling. It looks like they were enjoying a beautiful day in the park.

On the left is the birth mother of those kids. She will be the first to admit, things haven't been easy – but she loves these kids.

The other woman is the foster mother. She loves these kids too. Two of the kids were adopted by the foster family, one lives with the birth mom, and the foster child on the mother's lap was soon to be reunited with the birth mom. They are celebrating Mother's Day together.

Foster families provide more than a safe place for children to land. This foster/adoptive parent is a wonderful mentor for this birth mom!

Pledge Packets & Commitment Sunday

On the first of November we had already received a 20% response!

We ask that you please return your pledge cards by Wednesday, November 9.

They can be placed in the offering plate on Sundays, or may be dropped into the locked office mail slot if you are in the building. Please do not place them in the outside mailbox without using a stamp.

We will bless the offerings on Commitment Sunday, November 13.

If you have not yet received your packet and year-to-date 2022 statement, please contact Denise at denise@gracedm.org or 515-276-6873 extension 200.

Grace SURVEY

Survey says...

Grace Lutheran is at a pivotal point as we strive towards our new normal coming out of the pandemic. We ask for your help in providing honest feedback. Our goal is to see where we are now and consider a sustainable future in all ways: spiritually, educationally, and financially. Please have every person in your household who is able to fill out this survey. Paper copies are available in the office or mailed upon request.

<https://forms.gle/JvAh3GMx1RctpgdH9>

Adult Education – Sundays!

Join us during the education hour after worship each Sunday as we start a new chapter in the Book of Faith Series.

We will study the book of Matthew.

"Throughout history Matthew's gospel has played a prominent role in Christian worship and practice, and to this day it retains a central place in most people's experiences of the New Testament and the Christian faith. Matthew's gospel speaks well to church communities today, identifying the church as founded by Jesus (16:18) and issuing practical instructions for practicing community (18:1-35). Matthew envisions the church as made up of sinners and doubters who struggle with faith, temptation, and forgiveness, but ultimately reflect the ministry and presence of Jesus." The course will be facilitated by Pastor Mike and Vicar Bunny; we hope to see you there!

Sunday School - it's never too late to join in!

We're just starting to prepare for the Christmas Program, and we'd love to have your children participate!

Fall school & sports can make schedules crazy, but please know you are welcome to join Sunday school **any** weekend you can attend in person! We'd love it if you would join us! We meet right after the 9 a.m. worship.

Cookie/Candy/Dessert "potluck"

Do you have a favorite cookie, candy or dessert that you make for Christmas?



In place of donuts, we want to offer a variety of cookies, candies, and desserts after worship on Sunday, December 18. Please join us for this special "potluck" of sorts!

Watch for ways to sign up to share a couple dozen of a favorite cookie, candy, or dessert, if you feel called to do so. This is NOT intended to induce stress! Please share if it works for you. If not, that's okay, too!

I'm also looking for a few volunteers to "host" the refreshment time after worship on December 18.

Stars! Angels! Shepherds! Kings! Christmas Program during worship on Sunday, December 18, 9 a.m.



First, thank you to everyone that has offered to help with the Christmas Program this year.

We have instrumentalists, handbells, choir, Sunday School student voices, etc. and we have volunteers for other details, as well! Thank you! Thank you!

We have started preparations early, not to overlook the church year between now and December 18, but instead, to prepare so that the Christmas Program is a source of joy – during the preparations and during worship!

Everything we do in ministry should be driven by prayer. The Christmas Program is not an exception! I pray that we find joy in time spent together preparing and joy as we tell the timeless story of the birth of Jesus during worship on December 18!

There are still ways to be involved! If you want to know more, give me a call, send me an email or find me during Sunday School on Sunday mornings.
Denise@GraceDM.org or 515-669-7242 (cell).

Finance Report – September Results

Financial results for September YTD are as follows:

- Income – Actual \$298,562, Budget \$324,525
- Expenses – Actual \$301,206, Budget \$315,450
- Net activity – Actual \$(2,644), Budget \$9,075



Actual net activity was below of budget by \$11,719. Pledged offerings are the primary reason for the difference. Pledged offerings are below budget by \$25,258. This variance is offset by several expense categories that are below budget.

Council Highlights

Call to order – Meeting called to order at 6:02 P.M.

Devotions – Pastor Mike – We help make God with us known.

Adoption of Agenda – Carter moved, Jenny seconded, motion passed.

Approval of Minutes from Sept 20 meeting – Carter moved, Aaron seconded, motion passed.

- a. Mission Action Fund – Reviewed Version 3 of the fund guidelines and the application. Kevin will make the requested updates and send to Alex for dissemination for approval via email.

i. Post Sept 20 meeting Amendment: The following voted in support of the new documents: Mike, Aaron, Dean, Nancy, Carter, Bruce, Val, Tom, Jenny, and Alex voted in support of the updated documents. The motion passed.

On October 11, the Executive Council voted to approve the ELCA recommended Silver Plus with HSA plan through Portico for Pastor Mike.

Staff Reports – received prior to the meeting for review.

- a. Discussed the issue of having non-church related reading materials set out in the church. Will manage on a case-to-case basis as needed, not critical to draft a policy at this time.
- b. Starting to address the RIC process as evidenced by the council meeting this month.

Old Business

- a. Reconciling in Christ (Reconciling Works) – Minna Bothwell from Capital Hill Lutheran Church in the East Village shared her experiences with Reconciling in Christ. Utilized various techniques and styles to share information and get the congregation on board (one on ones, panel discussions, etc.) More information can be found on the Reconciling Works website.
- b. Will continue the discussion at the next council meeting and vote on pursuing learning and education about the process prior to beginning the discussions with the congregation.

New Business

- a. Stewardship/Mini Capital Campaign
 - i. Finance committee recommends a 3.9% increase ask based on current congregation membership for the stewardship campaign. Stewardship materials will be sent out this week.
 - ii. Will include information about the “mini-capital campaign” to run to 2 years to finance the air conditioning and lighting needs for approximately \$85K. Council reviewed the letter and a motion was made to approve the mini-capital campaign request. Mike motioned, Carter seconded, motion passed with nine aye votes and one nay vote.
 - iii. Carter moved to approve the purchasing of the sanctuary lights (bid \$23K) immediately before the prices go up. Aaron seconded. Motion passed.
 - iv. Recommended that the office restart sending out quarterly statements for pledged offerings.
 - v. 2022 is projected to end as a strong year and should start 2023 ahead. PPE loan surplus is also available in 2023.

Adjournment – Alex adjourned the meeting at 7:43 P.M.

November 1, 2022 was a landmark day for DMARC Food Pantries

Between the 15 metro DMARC pantries, they served 1500 customers, the most ever served by DMARC in one single day.

SNAP Food assistance was reduced in 2022, meaning individuals and families who qualify for assistance receive less food each month while paying for increased rents, fuel, increased food prices and overall inflation.

We understand these same forces are affecting those at Grace as well, but if you can help in anyway, we encourage you to do so as the Little Free Pantry is a much needed and well used resource for our neighborhood. Please share and tell others about this ministry as well – even if someone can only place one item a week vs. making an ongoing donation, twenty people placing 2 items a week adds up fast. Think about the following quote/sobering fact, and then click on it to follow a link to reports and data at Feeding America.

“29% of those experiencing food insecurity do not qualify for federal nutrition programs.”

Food Pantry Update!

Our backstock room is teetering on empty and we need your help to fill it up again! With the upcoming winter months, we need to stock it differently for the safety of our friends who pickup the food. We're going to move from items that are packaged in glass or in cans to items packaged in plastic, boxes or bags! Here's a list of items we are looking for:

- Cereal
- Oatmeal – individual cups and packets as well as boxes! Rolled oats cook faster because they have been mechanically broken down.
- Mac & Cheese
- Ramen Noodles
- Instant Mashed Potatoes
- Stuffing Mix
- Dried Beans & lentils
- Rice – white, Brown Jasmine, mixed and spiced rice mixed (plain food can get boring, and the holidays are coming up!)
- Barley
- Small, individually wrapped packages of cookies, crackers, snacks
- Individual cups of soup – ready to eat or the dry kind where you need to add hot water.
- Shelf Stable boxes of broth (vegetable, Chicken, Beef) especially when paired with a bag of dry grains.
- Food in sealed pouches: Tuna, fruits, and ready to heat & eat soups in sealed pouches. The soups can be squeezed into bowls to be microwaved, pots to cook over a hot plate or burner, or the entire pouch can be placed in hot water to be heated up.
- Peanut Butter (in plastic)
- Jelly (in plastic)
- Dried Fruits & Jerky – high energy, shelf stable, easy to transport

Also, if you order a case of products from the Dollar Tree, it can be shipped to the store for free! It's a great way to get great deals and stretch your hard earned dollars! As always, you can always donate directly to the Little Free Pantry (online, in person, or mailed in contributions). This enables our team to order items as needed.

Thanks! Vicar Bunny & the Little Food Pantry Team

Star Tree!

The Committee is already working behind the scenes to gather names and prepare the star ornaments.

Look for the Tree to be set up around November 20! Take home an ornament, purchase one of the gifts listed within the recommended amount, return the gift unwrapped and with the ornament by December 11! Make someone's Holiday!



Photo Wall and Directory Help Wanted!

It's time to update our photos and directory! It's been years, many of the children have grown up, in many cases family photos don't include newer members, and new members have joined since the pandemic began!

There are several ways you can help:

- contact the office to help coordinate a photographer and events to take photos
- help mount photos and print family information when photos come in
- send a new/updated family photo for the wall if you have one
- update your directory info (photo, address, email, phone numbers)

members.instantchurchdirectory.com

Only members who have given us their email address have access to the directory. If you would like to be added, please contact denise@gracedm.org



Praying in the Heart

*"Praying in her heart:
her lips were moving,
but her voice
was silent."*

1 Samuel 1:13

Advent Retreat

December 3, 2022

9:00 a.m. to 3:30 p.m.

[Grace Lutheran Church](http://GraceLutheranChurch.org)

5201 Urbandale Avenue

Des Moines, IA 50310

\$30 (Includes Lunch)

Please join us for a day of prayer and reflection as we welcome the Advent Season praying in the heart with the gift of Centering Prayer.

Please register at centeriowa.org



Contemplative Outreach
of Central Iowa

Silence Solitude Solidarity Service

www.CenterIowa.org

Grace Wins!

Where have you seen positive actions, innovation, or service for others happening at Grace over the last 2 or 3 years?

Whether you have been a part of a win yourself, or noticed individuals or teams accomplishing goals others might not know about, we want to hear about it from YOU! Don't wait for others to toot their own horn – we're Lutheran and that is never going to happen!

So please help us celebrate and recognize these positive moments and accomplishments!

Send photos, notes, email to
(michelle@gracedm.org, bunny@gracedm.org)

Friendly Visitor Deadlines 2022

Please note the next few months have earlier deadlines so we can get you all the Advent and Christmas news in advance!

- December: Thursday, November 17
- Christmas mini issue: Monday December 12
- January 2023: Monday, January 2

Thank You

I express my thanks to the Member Care Committee, Lydia-Martha Circle, the Pastor and staff members on the occasion of my recent birthday. I received many lovely cards, phone calls, and expressions of caring.

I miss seeing all of you and of being an active member of Grace. My love and prayers are with all of you.

Joanne Johnson



Photos: A beautiful fall tree at Grace, final harvest of the Grace garden (minus the sweet potatoes curing in the basement), the renewed sheds and deck (thank you Saturday Workgroup and Willing Workers!), the group who made 75 Fleece Hats and 40 Halloween bags for the LFP on October 30, and BOXES of gift bags made by the congregation on September 25 delivered to Moore Elementary!

